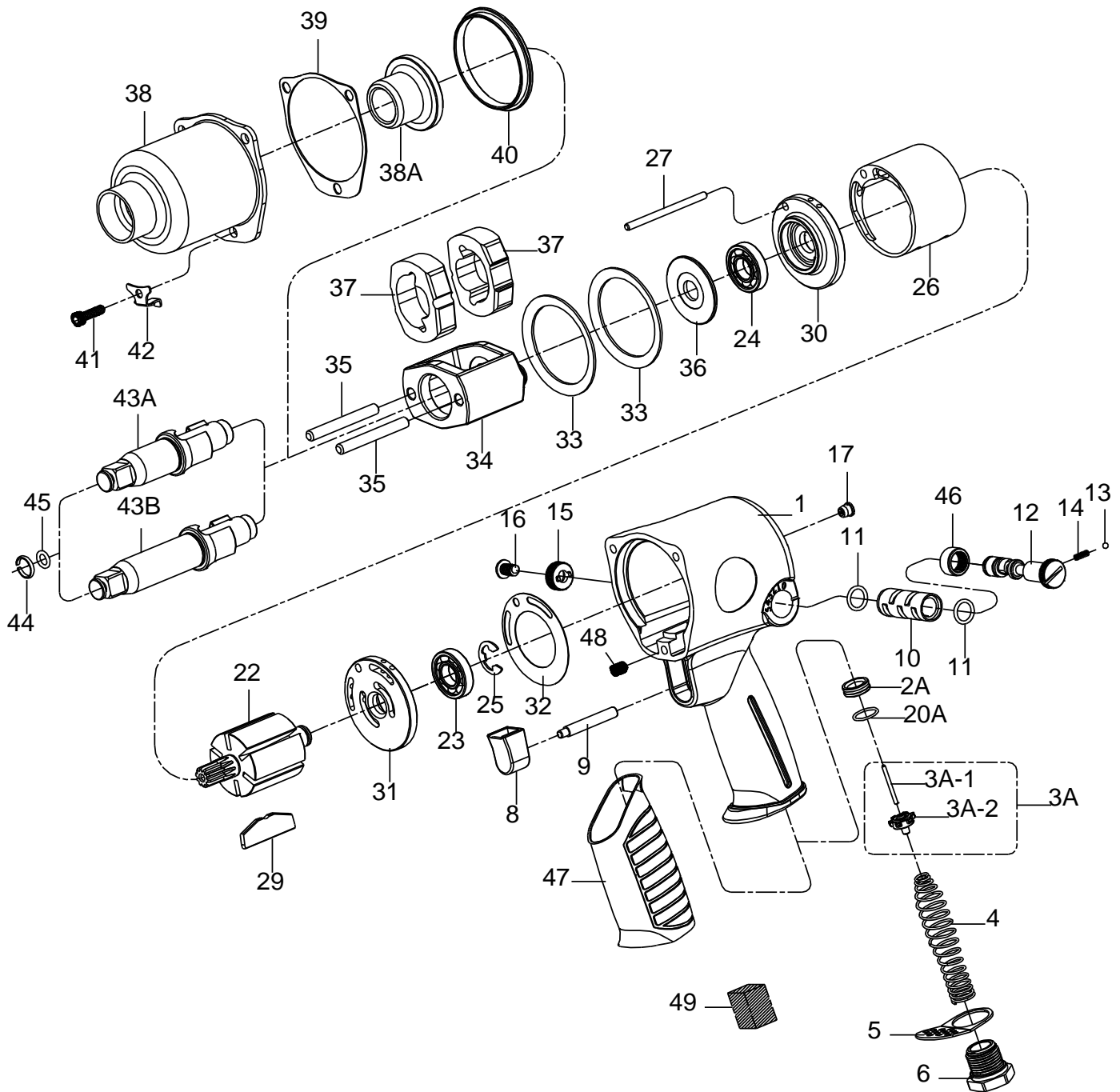


1/2" SQ. DR.SUPER DUTY IMPACT WRENCH



1434/1434-2

INDEX NO.	DESCRIPTION	REQ'D NO.	INDEX NO.	DESCRIPTION	REQ'D NO.
★ 1	Housing Assembly {incl.10.17.46.47.48(3)}	1	29	Rotor Blade	6
2A	Throttle Valve Seat	1	30	Front End Plate	1
★ 3A	Throttle Valve Assembly (incl.3A-1.3A-2)	1	31	Rear End Plate	1
● 3A-1	Throttle Valve Pin	1	32	Gasket	1
● 3A-2	Throttle Valve	1	33	Motor Clamp Washer	2
4	Spring	1	34	Hammer Frame	1
5	Exhaust Deflector	1	35	Hammer Pin	2
6	Air Inlet	1	36	Washer	1
★ 8	Trigger Assembly (incl.09)	1	37	Hammer	2
9	Trigger Pin	1	38	Hammer Case	1
● 10	Reverse Valve Bushing	1	38A	Bushing	1
11	O-Ring	2	39	Gasket	1
12	Reverse Valve	1	40	Separator	1
13	Steel Ball	1	41	Screw	3
14	Spring	1	42	Trigger Retainer	1
15	Reverse Valve Knob	1	43A	Standard Anvil (for kl-1434)	1
16	Screw	1	43B	2" Extended Anvil (for kl-1434-2)	1
● 17	Grease Fitting	1	44	Socket Retainer	1
20A	O-Ring	1	45	O-Ring	1
22	Rotor	1	● 46	Reverse Valve Bushing Gear	1
23	Ball Bearing	1	● 47	Rubber Grip	1
24	Ball Bearing	1	● 48	Heli-Coil	3
25	Retainer	1	49	Muffler Element	1
26	Cylinder	1			
27	Cylinder Dowel	1	TK	Tune-Up Kit { 4.11(2).13.14.20A.23.24.25.29(6).32.39.44.45.49}	

★ Must be Purchased in Assembly Set

● Recommended not to be purchased alone due to asse

PA1-01434-4

20090415R3